

March 2015

The Banner

Newsletter of the Presbytery of Arkansas

In this issue:

(Click on the link below to jump directly to an article, or scroll/page down to read the entire Banner from beginning to end)

[Bill Galbraith: "Traveling and Being Light"](#)

[Church Employment \(and Other\) Opportunities in or near our Presbytery](#)

[News of Our Congregations and Our People](#)

[Search Committee for Stated Clerk](#)

[NiAnn Thompson: Resource Center News](#)

[News for Presbytery Youth](#)

[Save the Date: "The P.L.A.C.E." Workshops Return \(August 8th, 2015\)](#)

[Disaster Preparedness Update: Remember the Arkansas Disasters of 2014?](#)

[Leslie Belden: Voices from the Border and Beyond](#)

[You Are Invited to Presbyterian Pilgrimage](#)

[Horizons 2015-2016 -- A Message From the Author](#)

[New Region List Available](#)

[Vera Lloyd Needs Your Help!](#)

[Presbytery's Committee on Nominations Welcomes Suggestions](#)

[Presbyterian Prayer List](#)

[Presbytery Calendar](#)

[Staff Contacts](#)

[About the Presbytery of Arkansas](#)

"Traveling and Being Light"

Next Saturday, March 21, a group of seventeen youth, college students and adults will leave for San Pedro Sula, Honduras and Presbytery of Arkansas' Region 1 Mission Trip. There, we will build relationships as we work with Tim and Gloria Wheeler, long-time PCUSA Honduran missionaries, and other residents of Las Glorias, Trinidad. We will also help build homes in communities which may be future sites for Solar Under the Sun and Living Waters for the World or Heifer International projects.



Mission Trip Director, Leigh Harvey, Director of Family Ministries of First Presbyterian Church of Rogers, has gathered participants for two orientation sessions and has handled all the logistical details. The scriptural theme of the trip comes from Isaiah 49:6, "I will give you as a light to the nations that my salvation may reach to the end of the earth."

Your missionaries covet your prayers and invite you to remember all those whom we will meet and work alongside during our time in Central America. The group will return to Arkansas via Tulsa International Airport early Sunday morning, March 29.

Your partner in ministry,

Bill



Learning New Skills

Making New Friends





Tim and Gloria Wheeler

Doorways to Expanding Mission



General Presbyter's Out of Office Commitments

March

21-29 Honduras Mission Trip

30-31 Mo-Ranch Board Committee, Austin, Texas

April

13 Mission Group, FPC, Conway

15-18 Mo-Ranch Board

20-23 Bold Word Preaching Conference, Mo-Ranch

26 Installation of Katie Cummings, FPC, Bentonville

28 Presbyterian Village 50th Anniversary Gala

[Back to the top of this email](#)

Church Employment Opportunities in or near our Presbytery

Part Time Music Director -- First Presbyterian Church in Harrison, Arkansas seeks a qualified person to direct the chancel choir, hand bell choir, and praise band, with occasional youth/children's choir, meet with the pastor to plan music for worship, and direct all choir practices. Salary, vacation, study leave, and study fund are part of the salary package.

College Chaplain (Lyon College; Batesville, AR) -- Lyon College seeks an ordained PC(USA) minister to serve as College Chaplain beginning in the summer, 2015. Lyon is a U.S. News and World Report 'top tier' national liberal arts college affiliated with the Presbyterian Church (USA), and is an equal opportunity employer. Send letter of application, resume (including graduate transcripts), and the names and telephone numbers of three references to: Ms. Clarinda Foote, Director of Human Resources, P.O. Box 2317, Batesville, AR 72503-2317 or electronically to jobs@lyon.edu. The starting date is no later than August 1, 2015. Review of application materials will continue until the position is filled.

Director of Youth and Young Adult Ministry -- First United Presbyterian Church in Fayetteville, Arkansas is praying for a proactive leader with a love for youth and young adults and a shepherd's heart, a mature faith consistent with the Reformed Christian tradition, personal integrity, and an enthusiastic sense of humor and fun combined with a passion for teaching and forming youth and young adults to be committed followers of Jesus. Focus is 80% youth ministry and 20% college and young adult ministry. This is a full-time position with a generous continuing education allowance and healthcare. Complete position description and contact information available at <http://www.fupcfay.org/leadership/positions-open.aspx>. The position will begin as soon as possible in 2015.

Other Opportunities

Counseling Center Clinical Director (Monticello, AR) -- Vera Lloyd Presbyterian Family Services is seeking a Clinical Director for a new nonprofit counseling center in Monticello, AR, which will serve youth, adults and families. A detailed description of the position is available [here](#). You may send a letter of interest and resume to: Vera Lloyd Presbyterian Family Services, 1501 N. University Ave., Suite 345, Little Rock, AR 72207 or email to donnamahurin@veralloyd.org.

Bold Word Preaching Conference at Mo-Ranch, April 20-23, 2015



BOLD Word provides inspiring worship services where pastors can experience great preaching first hand!

BOLD Word participants dialogue with and learn from excellent preachers through workshop opportunities and can provide their own expertise to colleagues through a series of moderated discussions.

BOLD Word is a new and fresh approach to enhanced homiletical methods through a worship-centered conference led by a group of inspirational, amazing and passionate preachers!

Lodging and Conference Costs

Workshop participants will be lodged in Wynne/Flato hotel rooms, each of which features two queen beds and a full bath.

Conference costs include lodging for three (3) nights, eight (8) meals and conference tuition - which covers supplies, meeting spaces and great preaching.

Single Occupancy: \$504

Double Occupancy: \$466

Commuter: \$403 (excludes housing at Mo-Ranch, includes lunch and dinner during the workshop)

For help with or questions about registration, contact the registrar at registrar@moranch.org or 800-460-4401 x 246 or Bill Galbraith.

Pastor to Host Trip to Germany & Austria -- Kirk in the Pines pastor, Bill Bailey, will host a 12-day tour to the Best of Germany and Austria, Nov. 2-13. Fellow

Presbyterians and their friends are invited to join the group visiting these beautiful countries. Destinations include Berlin, Wittenberg (Luther sites), Leipzig, Marbug, Frankfort, Rothenburg, Salzburg, Innsbruck, Oberammergau, Neuschwanstein, Munich and more. Reservations are being accepted on a first received basis. For a brochure with the itinerary and more information, email kirktour@gmail.com.

[Back to the top of this email](#)

People and Church News

News of Our Congregations and Ministries

- Presbyterian Church of Bull Shoals** features a collection of items in the entryway during Lent to tell the story-an urn, candle, empty wine glass and fan.
- Holiday Island Presbyterian** offers training in the use of a defibrillator, CPR and first aid.
- First, Benton** is polling the congregation on their interest in playing handchimes and forming a praise band.
- First, Mountain Home** has a Lenten study at 10 a.m. each Monday.
- Mountainburg Presbyterian** shared a Shrove Tuesday Pancake Dinner before Lent began.
- First, Bentonville** offers college scholarships to senior high graduates who are church members and will host the Texas Boys Choir on May 18.
- First, Rogers'** worship leaders meet on the first Sunday of the month.
- First, Huntsville** held a fundraiser luncheon, prepared by Session on March 15 to benefit their Fellowship Hall project, followed by a visioning meeting.
- First, Little Rock** conducts a lectionary Bible study at noon on the second Wednesday of the month.
- First, Batesville** is having a sermon series on favorite scriptures suggested by the congregation between Easter and Pentecost.

News of Our People

- Rachel Jenkins Shepherd** was ordained by Presbytery of New Hope at her home church, First, Henderson, NC on March 1. She had preached and been examined by the Presbytery of AR on Feb. 21. Rev. Shepherd is the interim associate pastor for 9:00 worship and young adults at Second Presbyterian, Little Rock.
- Rev. Camille LeBron Powell** has been called as pastor of St. Andrews Presbyterian in Tucker, GA. She was previously associate pastor at Second, Little Rock and moved to GA with her husband's job change in Sept.
- Mary Shaw**, director of Christian Education at First, Springdale, is now also preaching once a month at Elkins Federated Presbyterian Church in northwest AR.
- Joshua Chronister** is the new youth director at Park Hill Presbyterian, North Little Rock.
- Wynne Presbyterian's youth director **Will Ritchie** has been accepted into occupational therapy school.
- Certified Associate Christian Educator **Susie Wright**, who retired in Nov. 2013, has resumed quarter-time work at Westminster, Hot Springs. She is a member of presbytery's Committee on Nominations.

--**Rev. Jim Fleming**, honorably retired, has moved to Hollywood, FL.

--On Sunday, March 8th, **Rev. Steve Frazier** was installed as pastor of First Presbyterian Church (Morrilton). A picture of the commission is below:



Left to right: Rev. Dennis Ritchie, Presbytery Moderator RE Ed Wilkinson, RE Dawn Dvoracek, Rev. Steve Frazier, Rev. Debra Freeman, RE Karene Jones, Rev. Jeff Cranton, General Presbyter Rev. Bill Galbraith

[Back to the top of this email](#)

Presbytery Seeks Stated Clerk

Teaching or Ruling Elders interested in the position of Stated Clerk for the Presbytery of Arkansas may send resumes or Personal Information Forms to Rev. Steve Hancock, Moderator of Stated Clerk Search Committee, by March 31st. His address is: Second Presbyterian Church, 600 Pleasant Valley Dr., Little Rock, AR 72227 (phone: 501-227-0000); or email to : stevehancock@secondpreslr.org. The Stated Clerk position is part-time, approximately 15-18 hours per week. The salary range is \$15,000-\$17,000 annually, depending on experience and background of the selected candidate. Travel costs are reimbursed, and a modest continuing education stipend is provided.

[Back to the top of this email](#)

Resource Center News

by [NiAnn Thompson](#), Resourcing Director
Phone 501.663.2424, ext. 104
Tuesday-Wednesday, 7:30 a.m. to 5:45 p.m.



PRESBYTERY FACEBOOK PAGE

If you have events that you want the people of the Presbytery to know about, post them to our Facebook page at www.facebook.com/PresbyteryOfArkansas. Rev. Anne Russ at First, North Little Rock (Argenta) at 501.374.7677 or email revruss@gmail.com will be glad to answer your questions.

RAVE REVIEWS:

Theresa Spragins, Director of Christian Education at First, Conway, remarks that their Young Adult Sunday School class used and really enjoyed "**Living the Questions**" DVD study with leader's guide. "Wrestling with the questions presented broadened their take on theology."

The network of Resource Center Directors gives high marks to the new book from "Feasting on the Word" entitled "**Guide to Children's Sermons**" by David L. Bartlett and Carol Bartlett. This book will "equip church leaders and children's ministry volunteers to deliver children's sermons that are free of gimmicks and simplistic conclusions, that welcome children into the family of faith, and that give a foundation in God's good news for all people."

YOUR Resource Center has a sample of the new children's curriculum that the denomination is releasing this fall "**Growing in Grace & Gratitude**." Certified Christian Educator Linda LeBron presented a pre-presbytery workshop on this curriculum in Feb. in Clarksville, and Candace Hill, coordinator of Educational Ministries in the PC(USA), will present another one at The PLACE educational event on Aug. 8 in Little Rock. If you'd like to see a sample in advance so your CE committee, ministry team, pastor and teachers can decide if this is what you want to use starting this fall, it includes the overview of the fall 2015 quarter, session flow and components, supplies list, tips on including special needs and disabled children, notes on reading and pre-readers, and samples for multi-age (5-10) and narrow graded groups of 3-5, 5-7, and 8-10.

COMPARISON CHARTS and descriptions of various Vacation Bible School curricula are available from YOUR Resource Center. The Outlook magazine looks at offerings and approaches from Congregational Ministries Publishing/PC(USA), Augsburg/Fortress, Bogard Press, Cokesbury/Abingdon Press, Concordia Publishing, Jeff Slaughter Ministries, Great Commission Publications, Group Publishing, Living Waters for the World and others. Cokesbury goes into details of prices, music, video, student and leader books, decorating helps and Spanish language components. YOUR Resource Center has the PCUSA, Cokesbury, Concordia, Living Waters, Solar under the Sun, Habitat and other undated, permanent kits and books in stock for your examination.

BETWEEN EASTER AND PENTECOST

The weeks (and Sundays) between April 5 and May 24 can be lively and energizing if you plan now. Why not consider one of the studies in the "**Being Reformed: Faith Seeking Understanding**" series from the PC(USA). Each of these six-session studies has a leader's guide and participant's book, and topics range from Bible to worship to theology to social issues. We have all of these titles in YOUR Resource Center so you may preview them now: Great Prayer of Thanksgiving, Transformational

Leaders, Theology for Presbyterians, More Theology for Presbyterians Exploring the "Book of Confessions," The Great Ends of the Church, Creation, Enough: God's Blessings in Abundance, Islam and Christianity, Following Jesus Today: Challenges and Opportunities, Seeing Jesus in John's Gospel, Christian Living in God's Splendor, Stewardship of Creation, The Prophets Still Speak, Seeking Social Justice, Wisdom from the Early Church, Re-membering Baptism, Reading the Bible for Understanding, Worship as Evangelism, and Into All the World: Participating in God's Mission.

This year I will be working each Tuesday (7:30-5:30) and most of Wednesday (7-1:30) and can easily be reached other weekdays by email, text or cell phone (501.337.2360).

Self-service hours in the Resource Center are from 8:30 a.m. to 4:30 p.m. Monday, Thursday and Friday. If these latter days are the best for your visits, I'll gladly gather resources for you to pick up and as usual, I'll mail resources to patrons on the days I'm here.

REMEMBER OUR ONLINE CATALOG! Just go to the www.presbyteryofarkansas.org website, click on "Resources," then on "Resource Center" and "click here to search the catalog" to conduct a simple or advanced search for just the right item.

(The Resource Center receives funding from Presbytery's Committee on Christian Education)

[Back to the top of this email](#)

Presbytery of Arkansas Youth News

**Join us for Presbytery of Arkansas
2015 Youth Summer Trips!!
Deadline for Registration: April 15th!!**

Mayflower/ Vilonia Disaster Recovery Mini Mission
June 14-17, 2015 | Current 8th-12th graders | \$60

**Jr. High Jubilee at Mo Ranch
in the Texas Hill Country**
July 4-9, 2015
Current 6th-8th graders | \$575

**Montreat Youth Conference
in Montreat, North Carolina**
July 25-Aug. 1, 2015
Current 8th-12th graders | \$750

And Save the Date for Pathways, August 8!
Second Presbyterian, Little Rock. Watch for info!

Youth from all congregations are welcome to attend!

Full information packets and Registration information can be found at
<http://www.presbyteryofarkansas.org/documents/YouthCouncil/Summer%20Trips%202015%20-%20Info%20and%20Registration%20forms.pdf>

**Want to stay updated about Youth Ministry happenings in the
Presbytery? "Like"**

us on Facebook!

Search

PresbyteryofArkansasYouthMinistry

on Facebook,

or go to

www.facebook.com/PresbyteryofArkansasYouthMinistry

This page is for anyone wishing to stay updated about Youth Ministry happenings in the Presbytery -- Youth Workers, parents, youth, Educators, Pastors.

(Presbytery's Youth Ministry receives funding from
Presbytery's Committee on Christian Education.)

[Back to the top of this email](#)

Save the Date -- The P.L.A.C.E Returns This Summer

Back by popular demand, the presbytery of Arkansas will again host "The P.L.A.C.E." collection of workshops on Saturday, August 8th, 2015 at Second Presbyterian Church (Little Rock). For a flyer with more information, [click here](#).

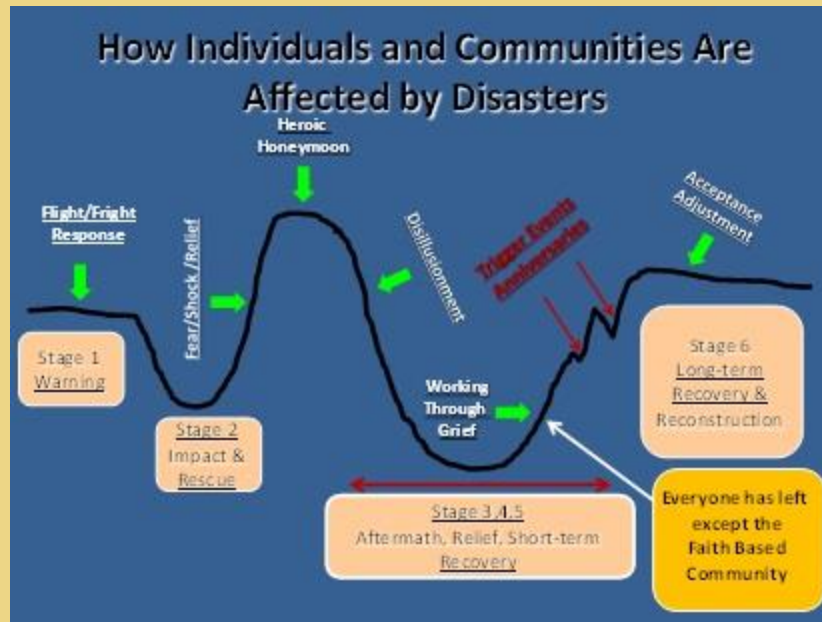
[Back to the top of this email](#)

Remember the Arkansas Disasters of 2014?



So where are the people of Paron, Mayflower, Vilonia, El Paso, and Saltillo now that FEMA, the Red Cross, Arkansas' state agencies, and others have gone home? Though there has been a great deal of recovery, many of the victims have exhausted their benefits and are relying on their own resources and the **faith-based community** to continue the recovery process.

Now that nearly everyone but the faith-based community has left, many disaster victims whose needs are as yet unmet, are still in limbo.



Your compassionate contributions are still needed by the disaster victims, now even more than immediately after the storm. For information, email James Anderson at jandersonret@gmail.com or Liz Branch at erbranch@comcast.net.

[Back to the top of this email](#)

"Voices from the Border and Beyond"

by Rev. Leslie Belden



On Saturday, January 23, Rev. Leslie Belden, Parish Associate at First United Presbyterian Church in Fayetteville, flew to Tucson, Arizona to begin an adventure titled "Voices from the Border and Beyond." A study tour aimed at learning more about immigration issues, including root causes in Central America, the group was made up of about twenty lay people, seminary students, pastors, and various staff of our PC(USA) mission agencies and partnering organizations.

The trip began at Southside Presbyterian Church in Tucson, Arizona, home of the Sanctuary movement in the 1980s and the current Sanctuary movement. Participants visited with Rev. John Fife, originator of the movement and former Moderator of the PC(USA), Rev. Alison Harington, who has revived the movement in light of current immigration issues, and women who have been sheltered at Southside through both of these movements.

We spent time at the border at Douglas/Agua Prieta, visiting the 20-foot-high wall and the Border Patrol, as well as Frontera de Cristo, our PC(USA) sponsored border ministry. We flew to southern Mexico where we experienced border ministries on both the Mexican and Guatemalan borders, and visited programs designed to provide training and hope for those considering migrating and those returning. Our last stop on the ten-day trip was in San Salvador, El Salvador, where we visited our U.S. Embassy and visited with officials there, the Salvadoran Ministry of Foreign Affairs, and two different churches in the suburbs of San Salvador that our PC(USA) is working through to bring hope in the midst of such poverty and violence.

We saw migrants who lost limbs falling off the train through southern Mexico. We visited with women who were kidnapped and raped trying to get to the USA to find jobs to support their families. We watched women perform plays that tell their stories of being left behind when the men in their lives traveled to the United States. We tasted wine made by women who banded together, wrote a grant for the equipment, and now have a way to feed their children. We heard from men who have formed farming co-ops to stand a chance to compete with the big-business farms. We witnessed the power of God to bring hope in the face of hopelessness.

Leslie would love to come and share what she's seen and learned with congregations around the Presbytery. Contact her at 479.466.1061 or lesliebeld@aol.com if you're interested.

[Back to the top of this email](#)

You Are Invited to Pilgrimage

Are you looking for a boost in your faith journey? Consider attending the Arkansas Presbyterian Pilgrimage to be held at Ferncliff Camp and Conference Center from April 23 through 26, 2015.

The pilgrimage weekend will begin at 5:30 pm on Thursday, and will end about 5 pm on Sunday. There will be plenty of worship, prayer, food, study, fellowship, and much more. The cost to attend the weekend is \$200. Scholarships are available if you need financial aid.

Applications are available on the Arkansas Presbyterian Pilgrimage website: www.pilgrimage-arkansas.org.

You may also pick up participant applications from the Presbytery Office in Little Rock. If you have any questions, you may contact the Registrar at ARPC.registrar@gmail.com

The deadline for applications is March 29, 2015.

[Back to the top of this email](#)

Horizons Bible Study 2015-16 -- A Message From the Author

Greetings friends. I am Judy Record Fletcher and the author of the 2015-16 Horizons Bible Study, ***Come to the Waters***. The study focuses on water stories and images in the Bible. As your Synod Executive Emerita and as one who knows so many of you personally, I am bold to commend this study to you for this next year's study. It is straight-forward Bible study with strong questions and suggestions for teaching the lessons. I tried to keep in mind who Presbyterian Women are and what you desire in your circles and study groups. Thank you for giving serious consideration to study *Come to the Waters*. I consider it my gift to you. Yours in Christ, Judy R. Fletcher.

[Back to the top of this email](#)

New Region Map

The Presbytery Restructure Task Force presented a new map of Regions for the Presbytery of Arkansas. This new map was approved by a vote of the presbytery in October 2014. For a list of the churches in each region, [click here](#). For a map with the new regions, [click here](#).

[Back to the top of this email](#)

Vera Lloyd Presbyterian Family Services needs your help!

On Thursday, April 2, we're participating in ArkansasGives, a one-day online giving event. When you make a donation to Vera Lloyd Presbyterian Family Services on April 2, you help us qualify for bonus dollars and cash prizes that will make your donation stretch farther.

What is ArkansasGives?

ArkansasGives is one day, one easy way to give. Between the hours of 8 a.m. and 8 p.m., Arkansans can go to ArkansasGives.org to make a donation to the charities of their choice. During this one-day event, each donation you give will help your favorite nonprofit organizations qualify for additional bonus dollars from Arkansas Community Foundation. All participating nonprofits will receive a portion of a \$250,000 bonus pool; the more a nonprofit raises in proportion to the other participating groups, the larger the share of bonus dollars it will receive.

Will you help us?

Your donation will enable us to connect boys and girls at our children's home this summer to positive and engaging summer activities, including activities that will improve physical fitness, academic outcomes and reading comprehension. Youth will participate in an on-line Time4Learning educational curriculum, spend a week at Ferncliff Camp, attend a University of Arkansas at Monticello day camp and be part of a campus-wide reading club.

How to donate

Put giving on your calendar for April 2, 2015. On that day, visit ArkansasGives.org to make a donation to Vera Lloyd Presbyterian Family Services between the hours of 8 a.m. and 8 p.m. ArkansasGives requires gifts to be made via credit card (including American Express, Visa, Discover and MasterCard and debit cards that bear the Visa or MasterCard symbol). The minimum gift is \$25.

Thank you for your support. Your help makes a huge difference!

[Back to the top of this email](#)

Presbytery Welcomes Nomination Suggestions

The Committee on Nominations asks for your suggestions for names of people who would be good candidates to serve on presbytery committees. You may submit these names by completing the Nominations Form at the following link: [2015 Nominations Form.](#)

[Back to the top of this email](#)

Prayer List for Congregations -- 2015 can be found [here.](#)

(Note: some web browsers may require you to press and hold the "Ctrl" key while you click the link to reach the linked website).

[Back to the top of this email](#)

[Presbytery Calendar](#)

PRESBYTERY STAFF:

General Presbyter [BILL GALBRAITH](#)

Acting Stated Clerk [DAVID DYER](#)

Resourcing Director [NIANN THOMPSON](#)

Director of Mission Support [KENNETH RICH](#)

Staff Resource for Youth [BRITTON VARN](#)

Staff Resource for Congregational Care & Development [MICHAEL VINSON](#)

Treasurer ["BUZZ" ROBERTS](#)

Moderator of Presbytery [ED WILKINSON](#)

Moderator of the General Committee [CLARE KELLEY](#)

Vice Moderator of Presbytery [LACY SELLARS](#)

[Back to the top of this email](#)



The Presbytery of Arkansas is a council of the Presbyterian Church (U.S.A.), which is part of the Reformed family of churches within the universal Church of Jesus Christ. Our vision is *to make visible the body of Christ* (Acts II).

We are composed of over 14,000 Presbyterians gathered in 87 active churches, a new church development and one ministry located in various towns and cities in the northern two-thirds of the State of Arkansas.

Phone 501.663.2424 Fax 501.224.2429 <http://www.presbyteryofarkansas.org>
