



Committee on Representation

Report to Presbytery
114th Stated Meeting

Raw Figures

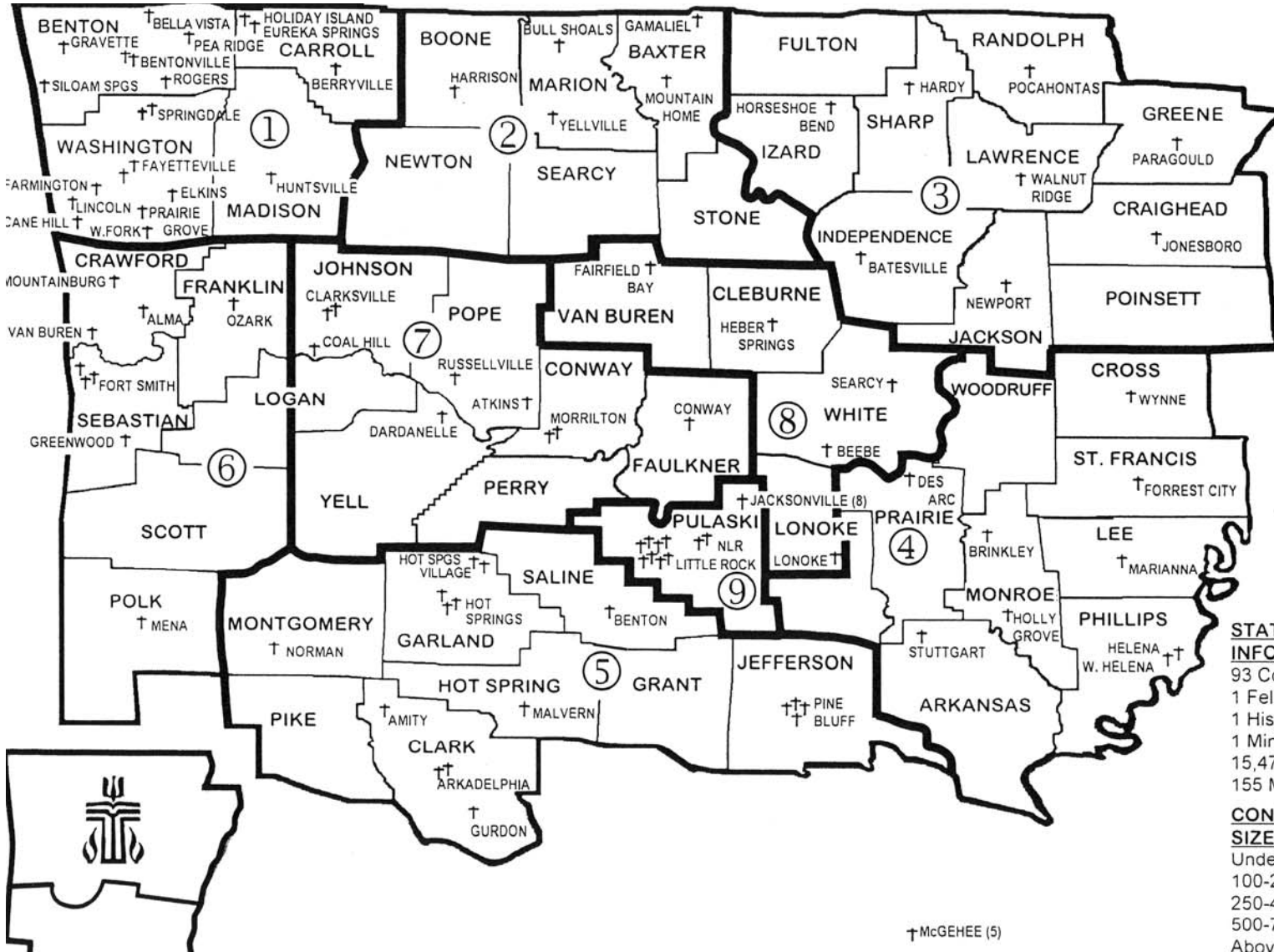
- 90 churches
- 4 unchartered groups
- 15,197 active members
- 7809 female members; 7388 male members
- 168 persons serving on Presbytery committees



Our Call:

The Presbyterian Church (U.S.A.) shall give full expression to the rich diversity within its membership and shall provide means which will assure a greater inclusiveness leading to wholeness in its emerging life.

(G-4.0403)



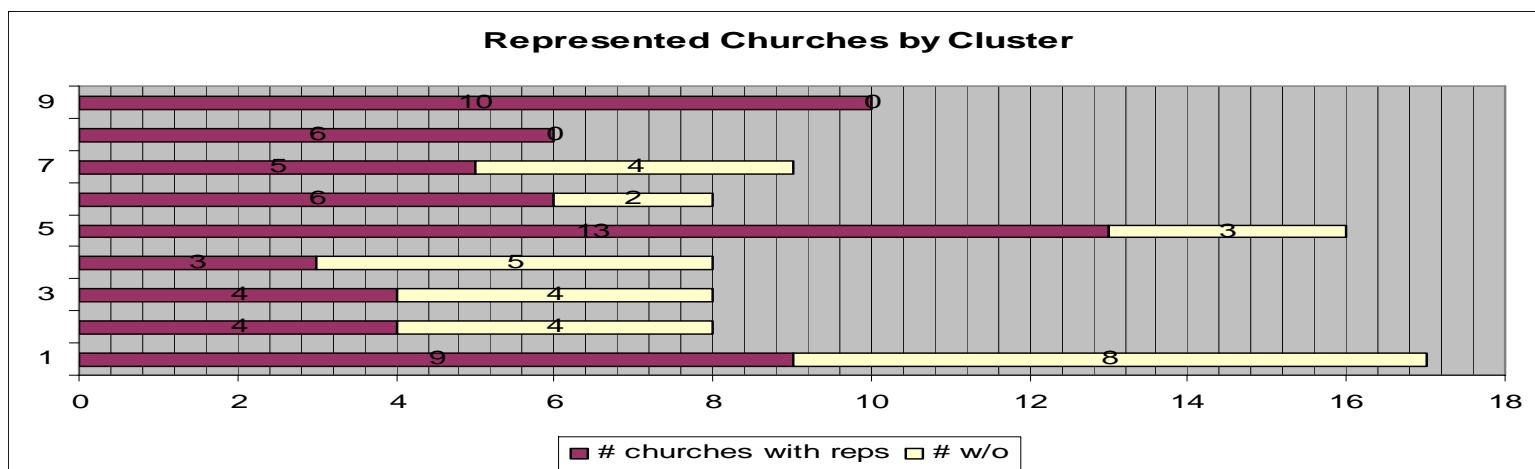
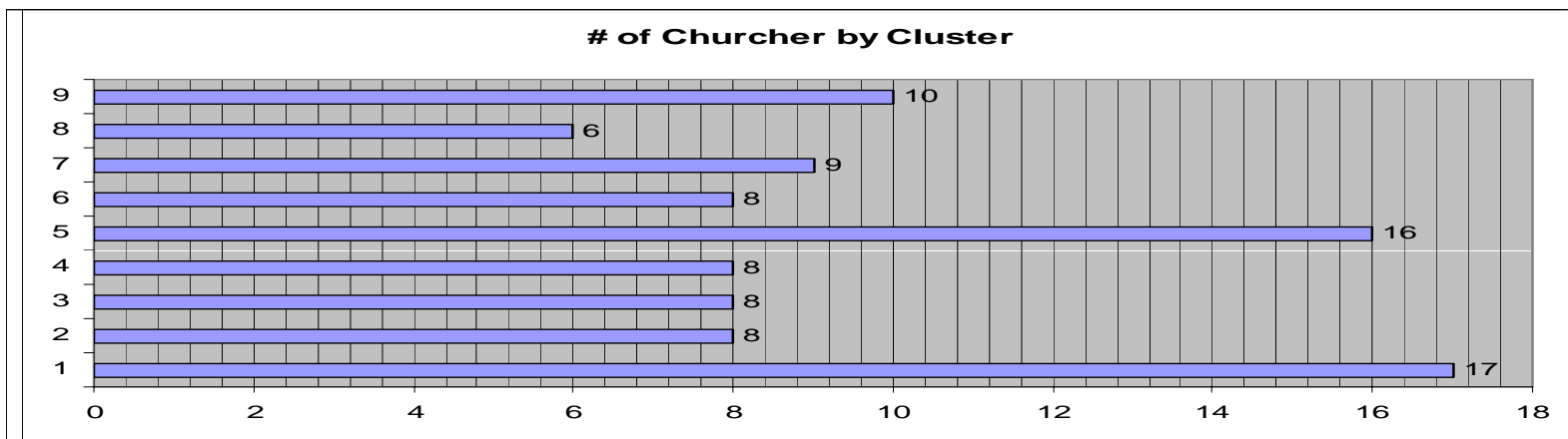
STATISTICAL INFORMATION

- 93 Congregations
- 1 Fellowship
- 1 Hispanic NCD
- 1 Ministry
- 15,470 Members
- 155 Ministers

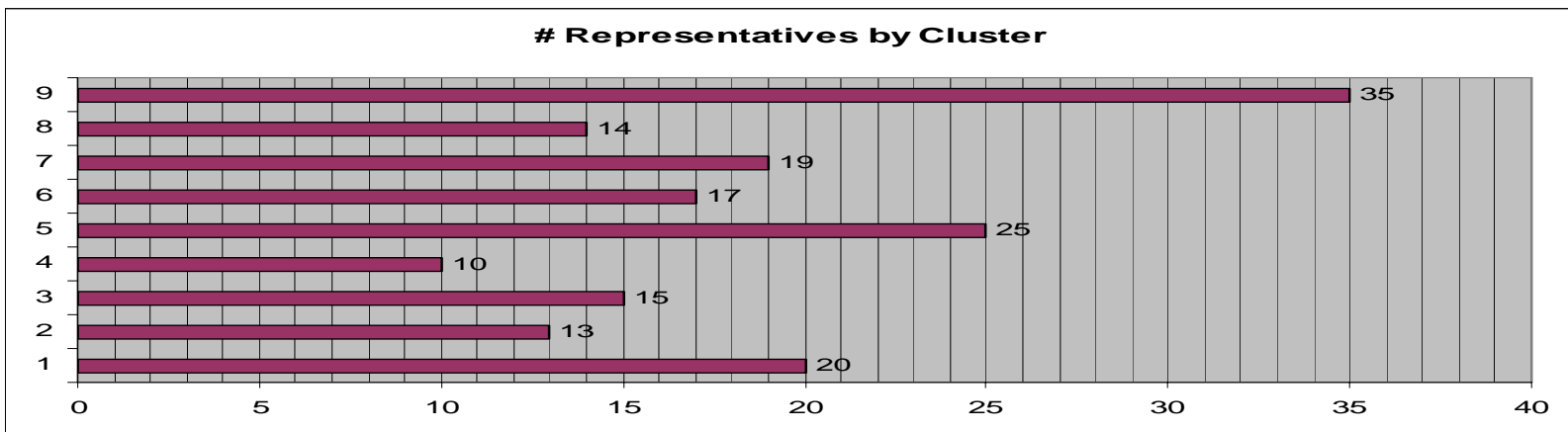
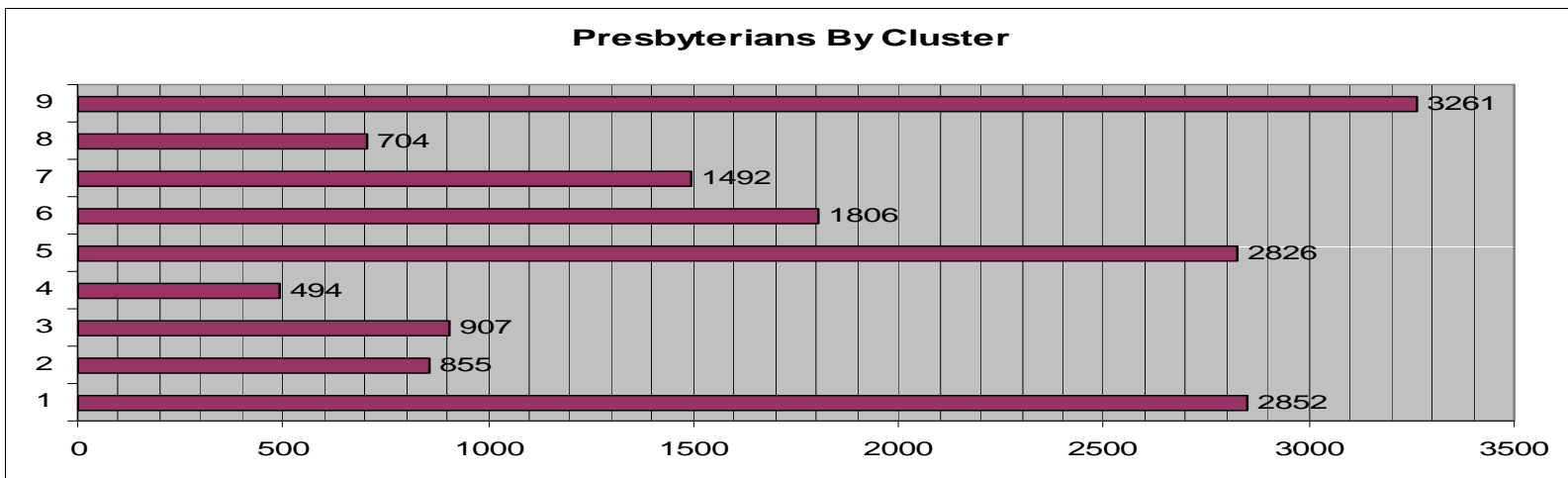
CONGREGATIONAL SIZES

Under 100	51
100-249	24
250-499	12
500-750	4
Above 750	2

Comparison by Cluster

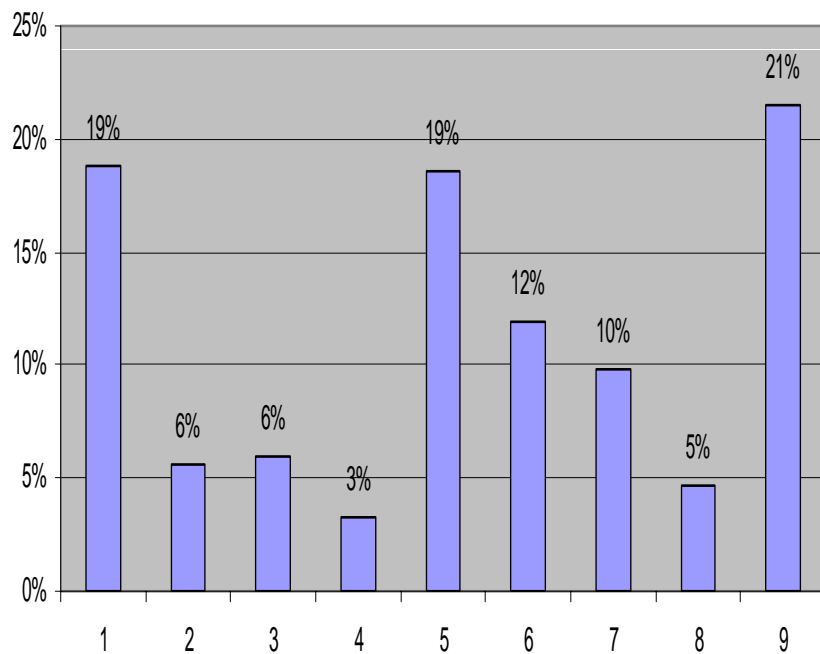


Comparison by Cluster

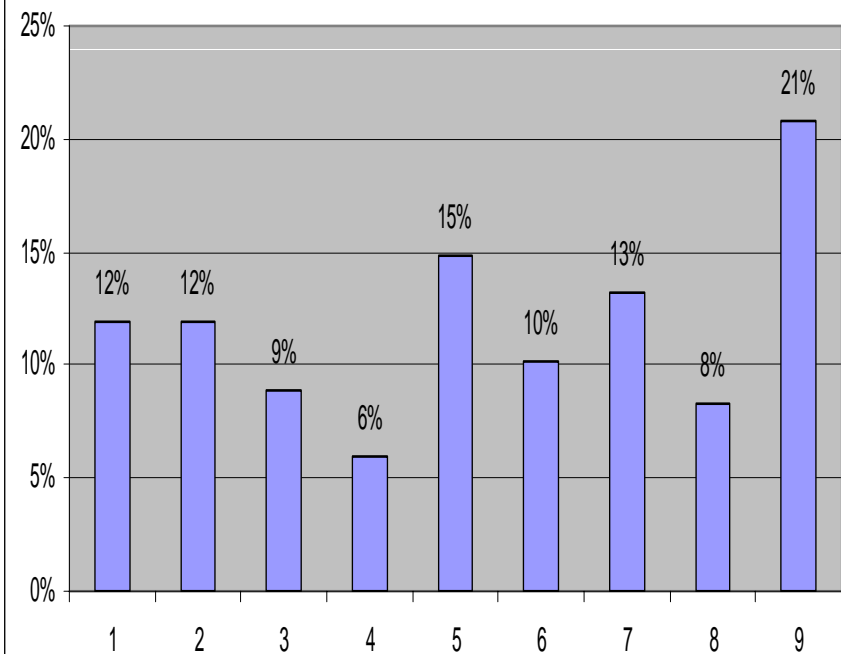


Comparison by Cluster

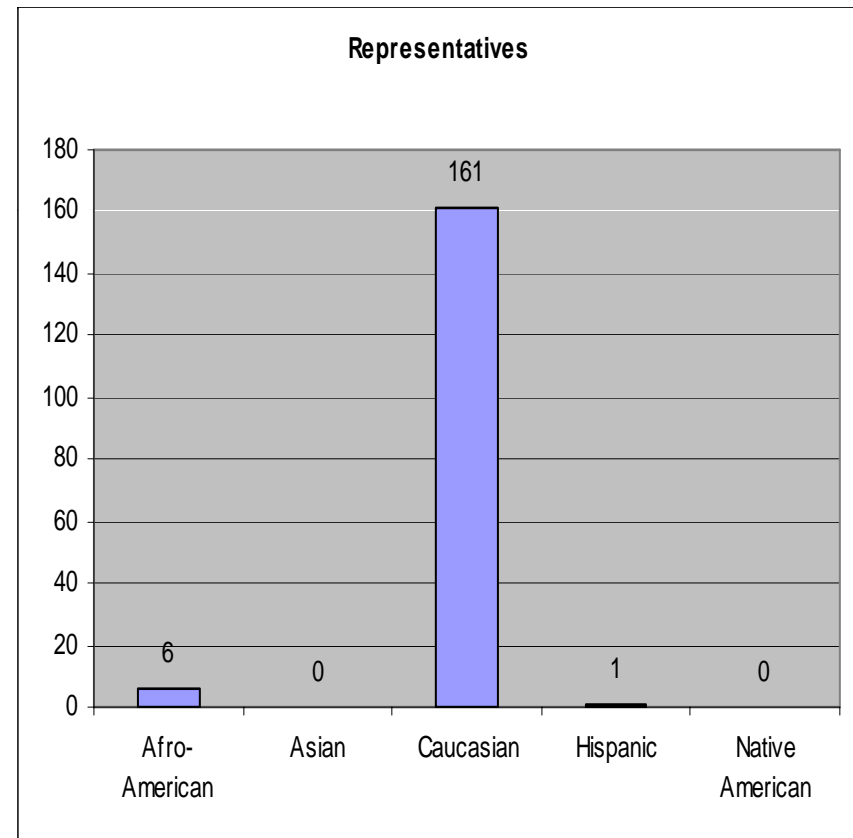
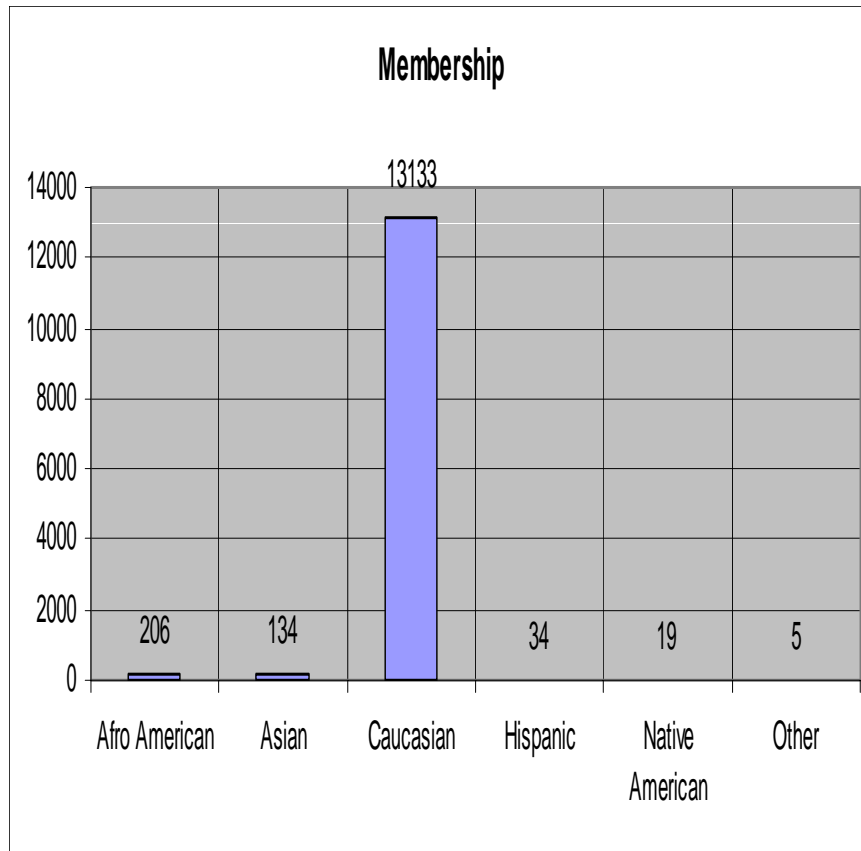
% of Membership by Cluster



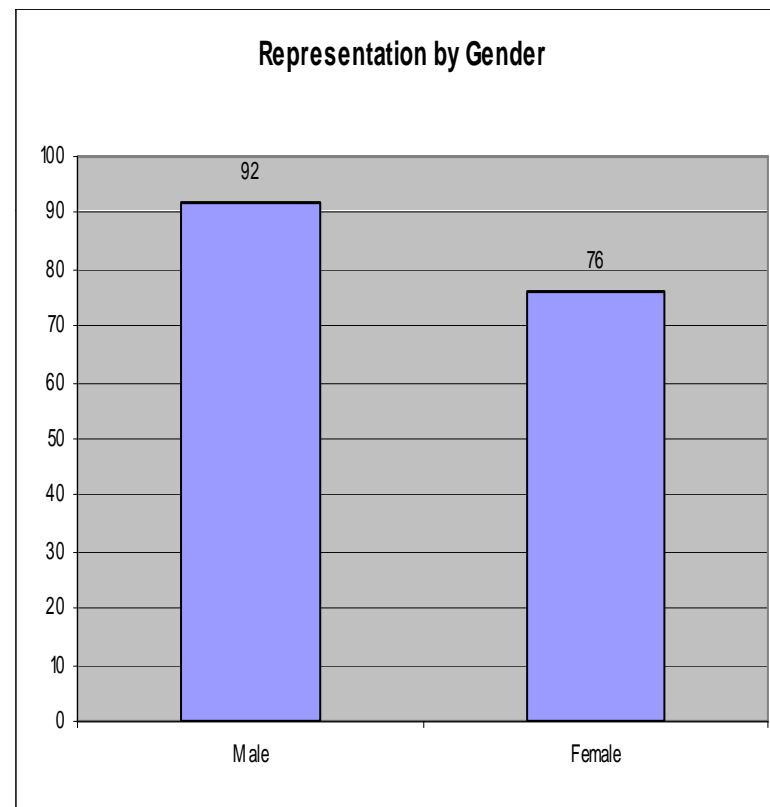
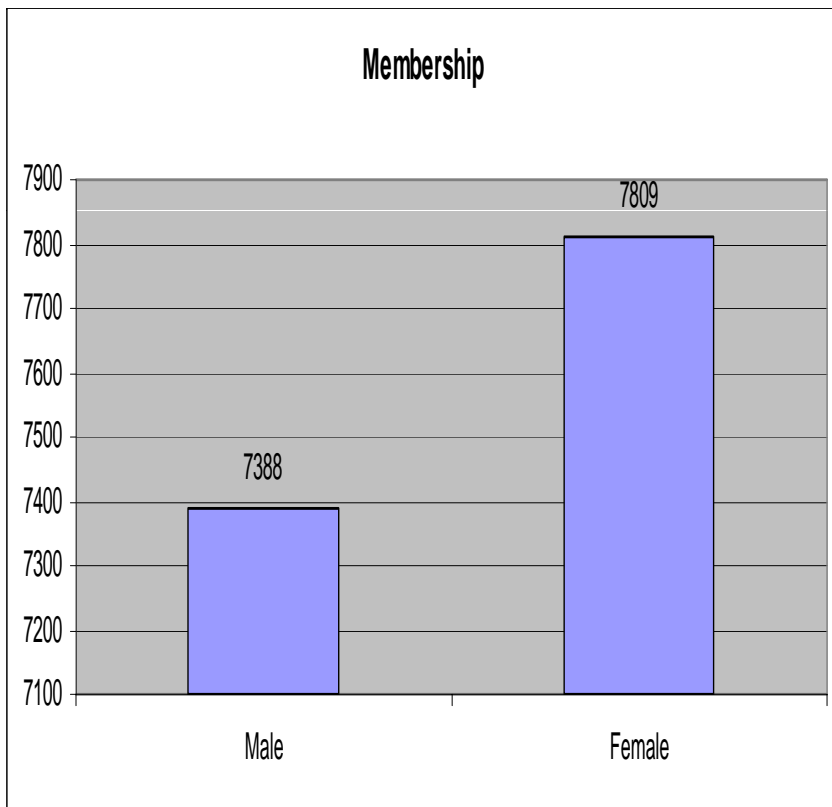
% of Representatives by Cluster



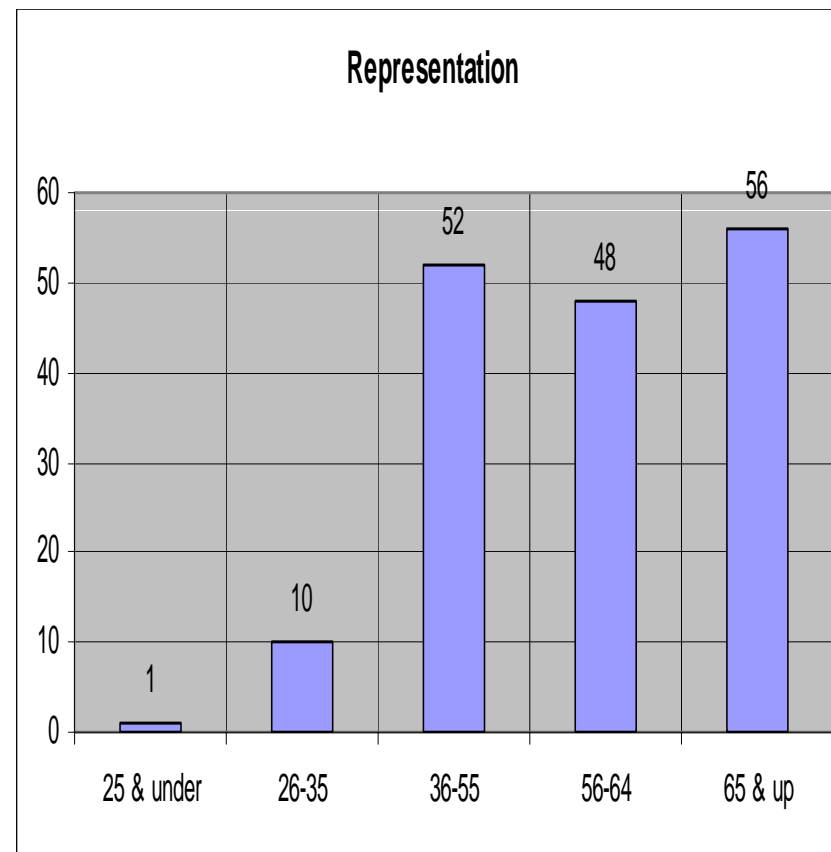
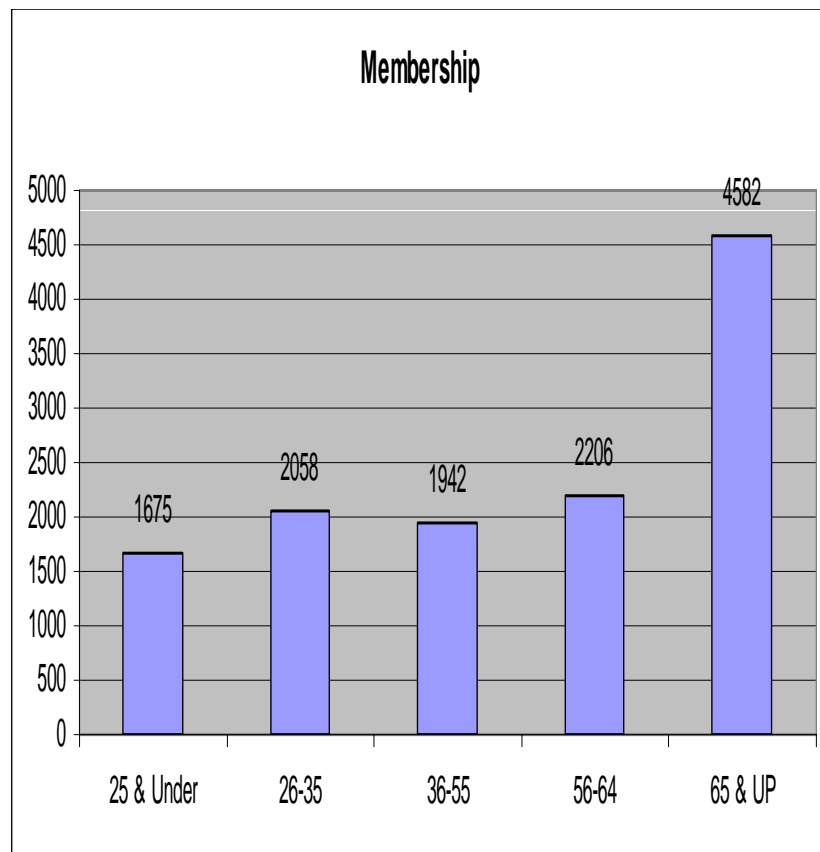
Racial/Ethnic Breakdown



Comparison by Gender



Comparison By Age Group



Representation by Ordination

